

This module provides a clear overview of all the colour, material and image data as well as users' own projects and favourites. The extended search allows specific selection of colours and materials. New surfaces can be added via the online material database.

4.1 Menu bar

4.2 Tabs

4.3 Favourites

Workspace

### 4.1.1 Data views


 File Studio View Extras Help
 

---

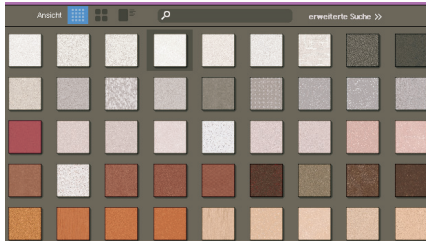
Library
 

Colors: 1344



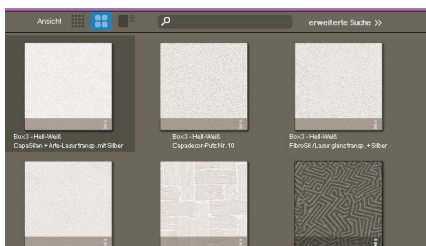
### Small

This provides you with a minimalised view of all images, colours and materials without any further product information. This view is ideal for looking at as many products as possible at once.



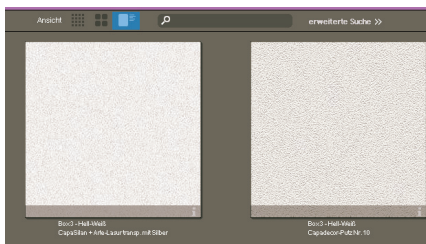
### Medium

This view provides you with a larger presentation of the product as well as the product name and the possibility of receiving a detailed information display (for information about the details see chapter 4.2.2 “Colour details” and chapter 4.2.3 “Material details”). This view is particularly suitable for having a look at many products at once and finding out first product information. Products are shown in the medium sample view as standard.



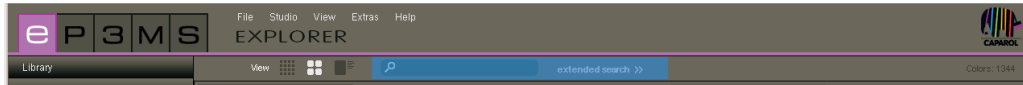
### Large

This view shows the images, colours and materials in a large view with the possibility of a detailed information display (for detailed information see chapter 4.2.2 “Colour details” and chapter 4.2.3 “Material details”). It is especially suitable for viewing product details at the search stage.

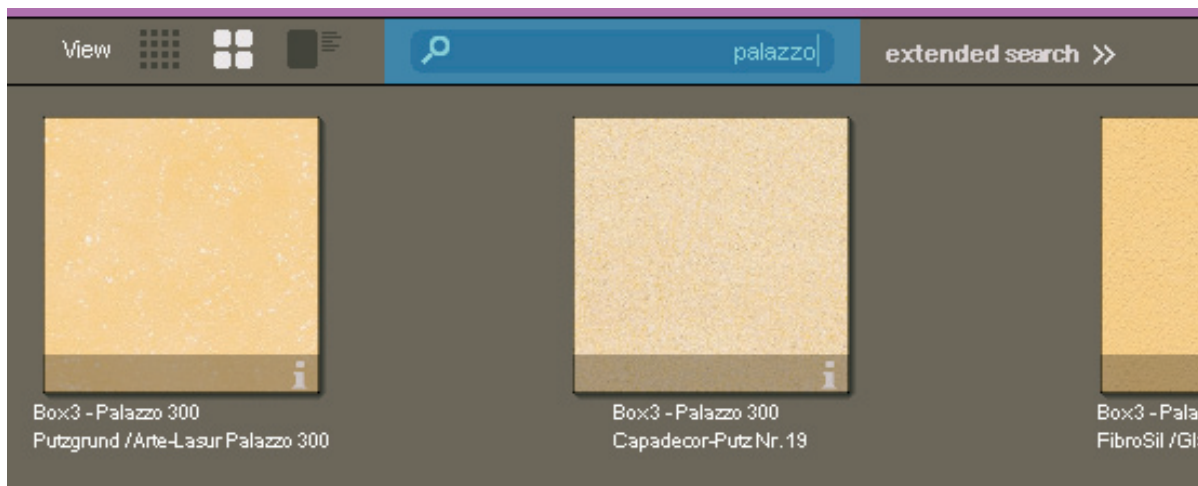


**Note:** You can alternate between the three data views by clicking “View” in the menu bar.

### 4.1.2. Search



You can use the search function in the menu bar for all the EXPLORED tab contents except for the online material database. If you are in the “Colour” tab, for example, you can enter the name of a colour in the search field, which will result in all the colours with this generic name being displayed. Always confirm your entry by pressing the “Enter” key or clicking the magnifying glass symbol to trigger the search.



#### Extended search for colours and materials

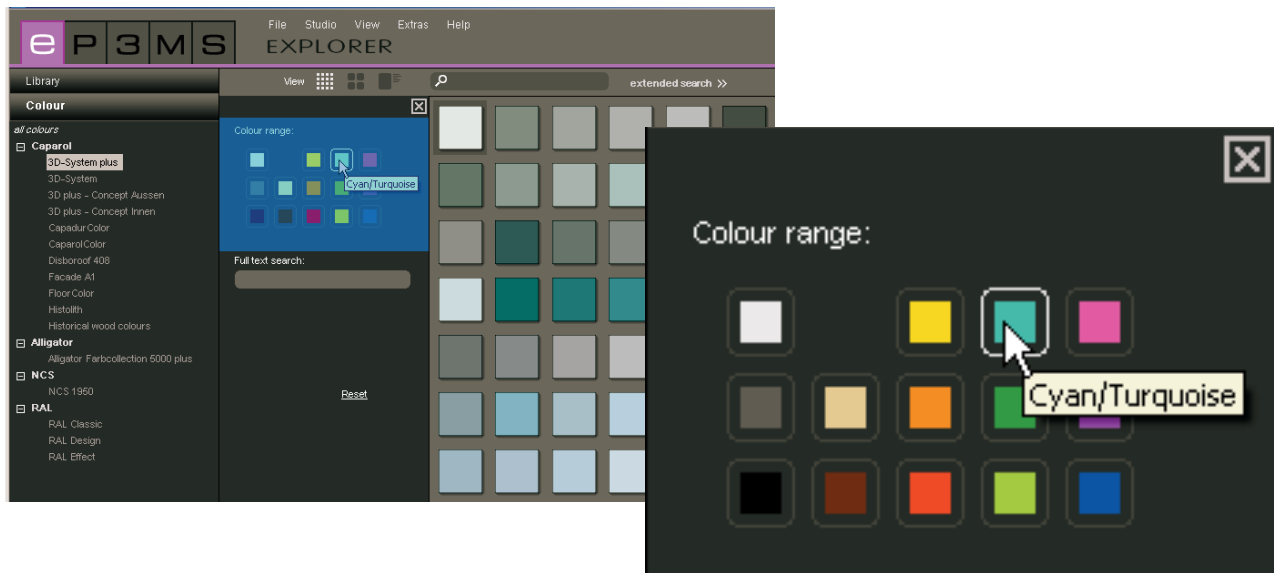
With the new program version, SPECTRUM 4.0 provides extended functions to optimise your product search within the “Colour” and “Material” tabs.

To use the new search functions, click “extended search” in the menu bar of the EXPLORED. In addition to the tabs, a further field opens which offers you two different search possibilities: Colour range and full test search.



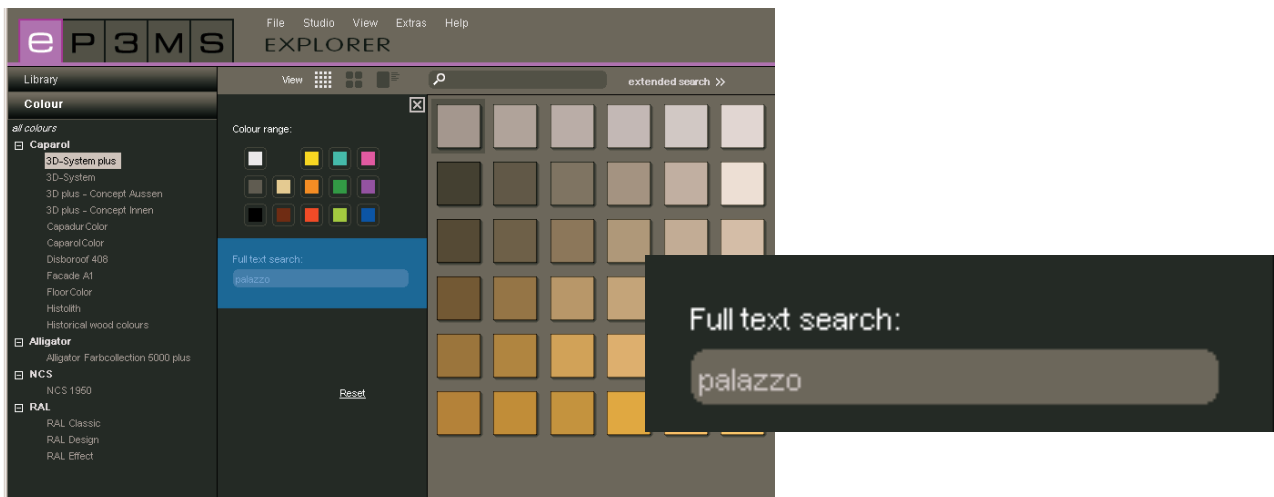
### Colour range

To limit your search within a colour or material collection, you can choose from fourteen given colour ranges. You are then shown a window with all database entries in the respective colour range. The colour range chosen is indicated by a white frame. Several colour ranges can be marked at the same time. Clicking on a selected colour field again deactivates it.



### Full text search

If you already know the name of the colour or material you are looking for, you can enter the text and use this function to search for it.

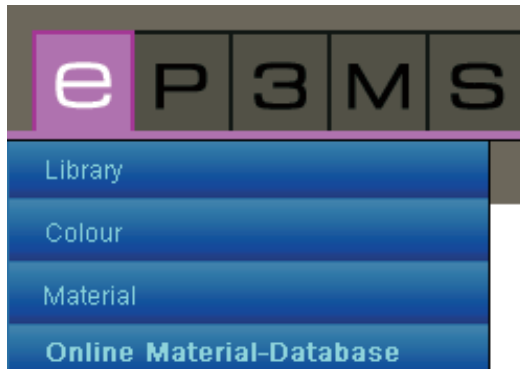


**Note:** The full text search can be restricted by marking “colour ranges” in the colour range search first. A second click on the selected colour range boxes deactivates the selection. You have deactivated the colour range search correctly when there is no longer a white frame around one of the fourteen colour range boxes. Now you can carry out the full text search without restrictions.

To remove your search criteria, click “reset”, to close the “extended search” window click the “x” in the top right-hand corner.

## 4.2 EXPLORER tabs

On the left-hand side of your workspace, the EXPLORER gives you an overview of all the SPECTRUM 4.0 database contents in the categories:

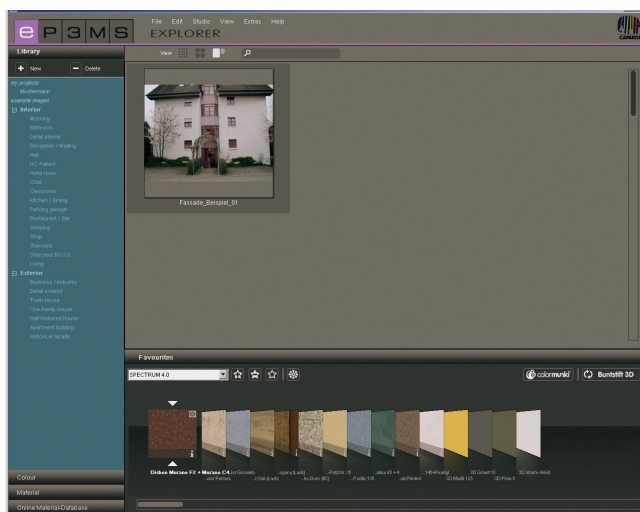


- Library (chap. 4.2.1)
- Colour (chap. 4.2.2)
- Material (chap. 4.2.3)
- Online material database (chap. 4.2.4)

Click on the different tabs to move between them.

### 4.2.1 Library

The library provides an overview of all the image data (example images and your own imported images) that you can work with in SPECTRUM 4.0. This is where you create and manage your own projects.



### Example images

You can find more than 200 example images from different countries in SPECTRUM 4.0.

### Image selection

You can choose between the categories “My projects” as well as “Example images” with the sections “Interior” and “Exterior” (façades). In the “Interior” category you will find prepared images from the segments living, hallways, classrooms etc., in the “Exterior” category family homes, apartment buildings or timber-framed houses, for example. In the “My projects” section you will find the project data you have created (for information on your own projects see “My projects”).

#### 4. EXPLORER

The list of sub-categories can be faded in or out by clicking the +/- symbol (in front of the respective category name “Interior”/“Exterior”).

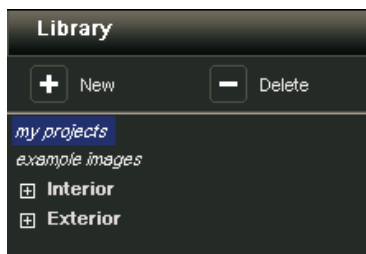
In order to view the example images from one sub-category (e.g. Living, Restaurant, ...) select this by mouse click.

#### **Loading an image into PHOTostudio for design work.**

Double-clicking an image in the workspace will load this directly into PHOTostudio for design work. The SPECTRUM 4.0 program interface changes to the PHOTostudio module (PHOTostudio see chapter 5).

#### **My projects**

When you create your own projects, SPECTRUM 4.0 gives you the possibility of saving image and material data in a self-created project folder, helping you to manage the data easily. “My projects” can be found above the example images in the “Library” tab. The “My projects” folder remains empty until the first “new project” has been created.

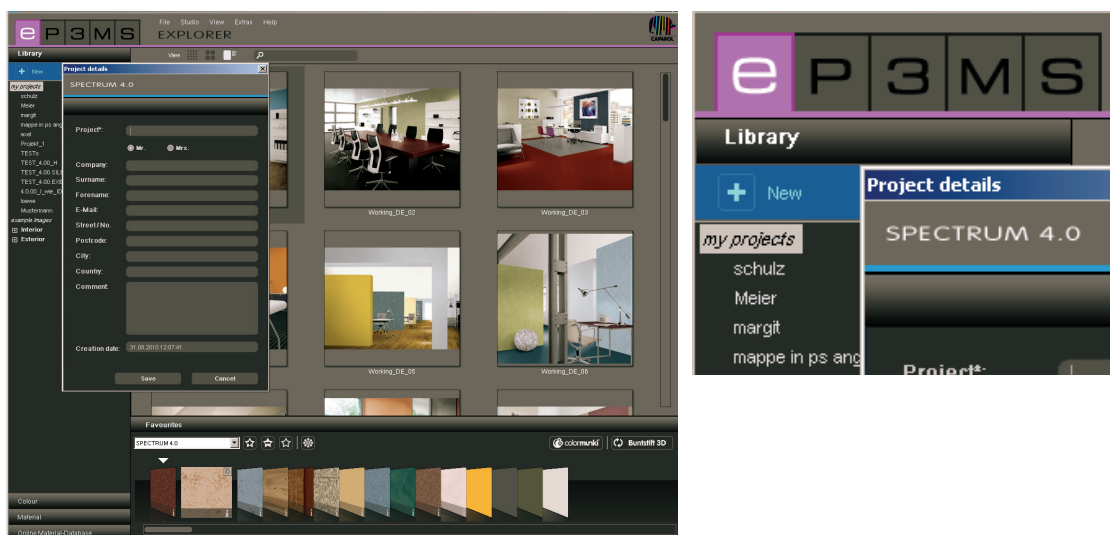


#### **Create new project**

To create a new project, click on the “New” symbol in the top area of the “Library” tab or use the main navigation “File”>“New”>“My project”. Alternatively, right-click on an existing project and select “Create project folder” (shortcut: Ctrl+N). The window “Project details” will open for assignment of a project name. Additional information about the project concerned, such as name, contact data and remarks can all be entered here.

Give the project an unambiguous project name (e.g. “The Jones family”). Other information can be added to the project later. Then click “Save”. The newly created project folder will now appear your “My projects” list.

See chapters 5 “PHOTostudio” and 7 “MATERIALstudio” for information about how to add designed image data or new material combinations to your project folder.



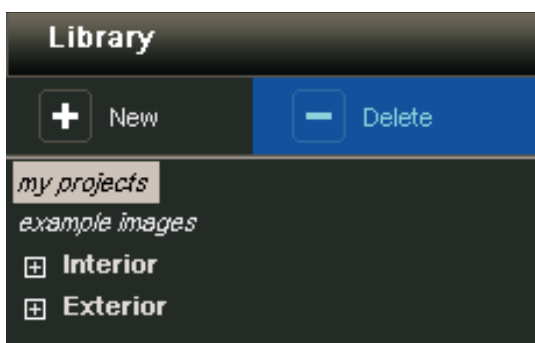
### Edit project details

To change project information, for example in order to add a remark or address data, double-click or right-click the project concerned and choose “Edit project details”. The “Project details” window opens again. Confirm your changes by clicking “Save”.

### Delete project

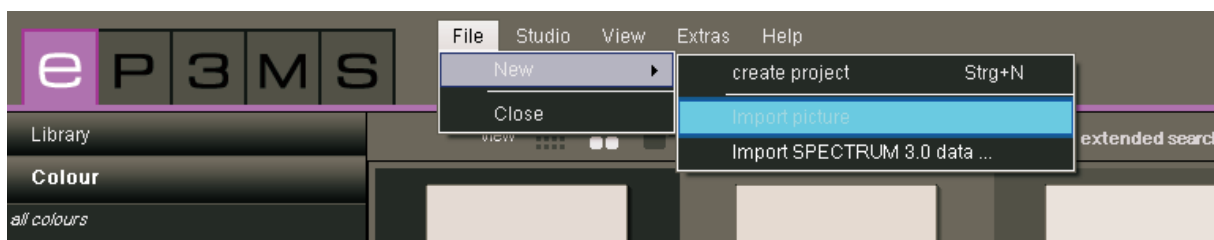
In order to remove an existing project irrevocably from the list of your self-created projects, first select the project concerned by clicking the project name (it has been selected when the project name is highlighted blue and the contents are shown in the workspace). Click the “Delete” button or right-click the project name and remove the project using “Delete project folder” (shortcut: Del).

**Note:** Projects that have been deleted cannot be recovered. For this reason, only delete a project when you are sure that the projects and its contents are no longer needed.



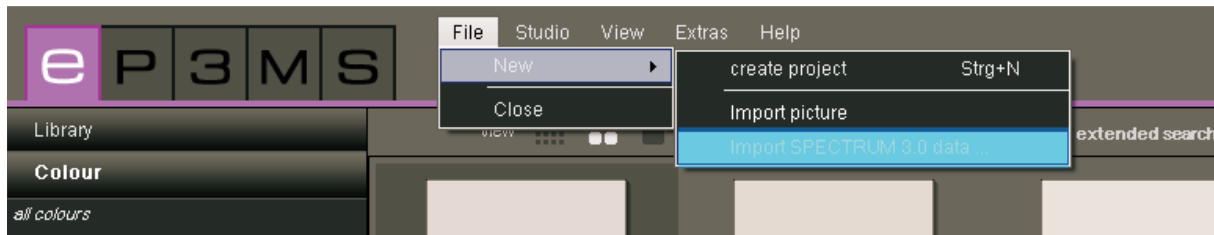
### Import image data

To import your own image data to SPECTRUM 4.0 use the main navigation “File”>“New”>“Import image data”. When the dialogue window opens, you can access the data on your PC or data carrier (e.g. USB stick) and select the image you want. Click “Open”, choose the respective target project folder and give the image an unambiguous name. Then click “Save” and the image appears in the selected project folder.



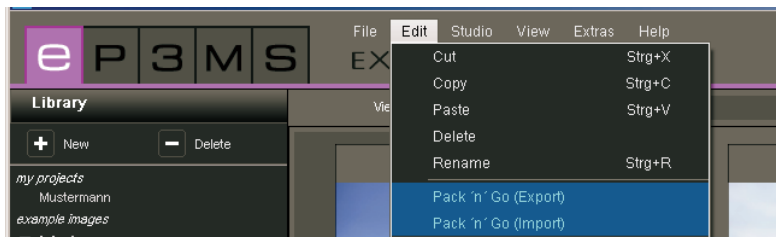
### Import Spectrum 3.0 data

The image data you processed in SPECTRUM 3.0 are not lost in the new SPECTRUM 4.0 program version. You can access your Spectrum 3.0 image database via the function “Import Spectrum 3.0 data” which you reach via an existing project or “File”>“New” (pre-condition: you are using SPECTRUM 4.0 on the same PC). First of all, choose one of your SPECTRUM 3.0 project folders in the window that opens and then a SPECTRUM 3.0 IMAGEstudio project from this project folder in the next step. You will see a preview of the selected image in the bottom right-hand window, and you can give the image to be imported a new name under “New variant name”. Then click “Import” to save the selected image in the project folder.



### Pack'n'Go

The Pack'n'Go function is used to exchange image data including all surfaces, grids and SPECTRUM 4.0 design between different PCs. Use the Pack'n'Go functions of the program to export and import image data.



### Pack'n'Go Export

To export an image, select the respective image in a project folder and then select “Edit”>“Pack'n'Go (Export)”. A window opens where you can choose the target folder you want for the image (e.g. an external data carrier such as a USB stick). Confirm with “OK” and the image will be exported to the target location.

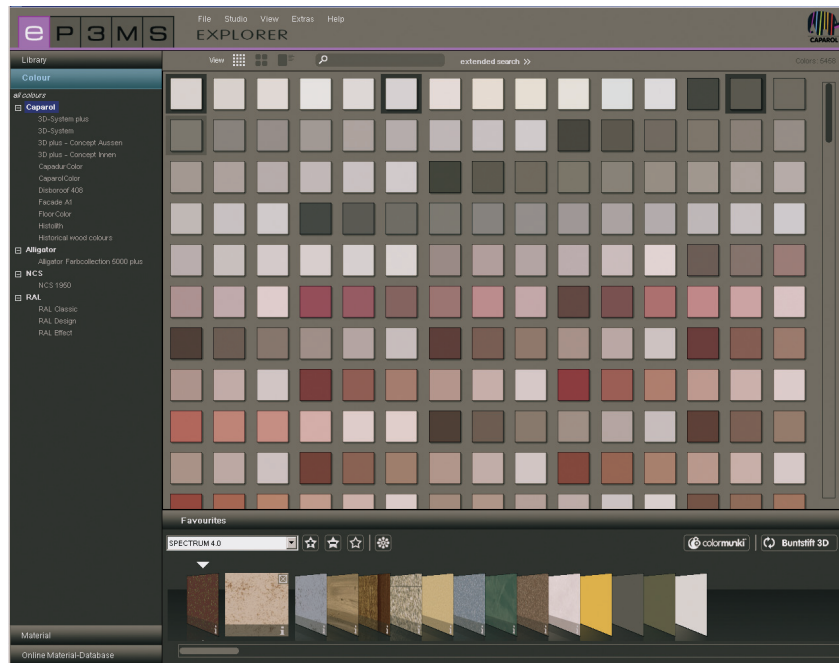
### Pack'n'Go Import

In order to import an image exported with Pack'n'Go to SPECTRUM 4.0, right-click on the project folder the image is to be imported to and select “Pack'n'Go (Import)” or use the main navigation under “Edit”>“Pack'n'Go (Import)”. A window will open where you can access the data on your PC. Choose the image you want from your hard drive or an external data carrier and click “Open”. The image is now imported to the project file.



### 4.2.2 Colour

In the “Colour” tab you will find all the colours of the colour collections from Caparol, RAL and NCS for use for your colour designs.

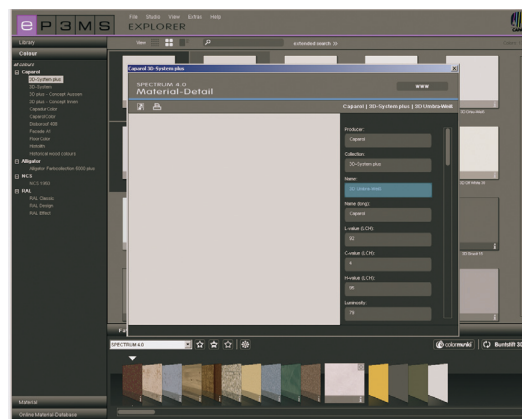
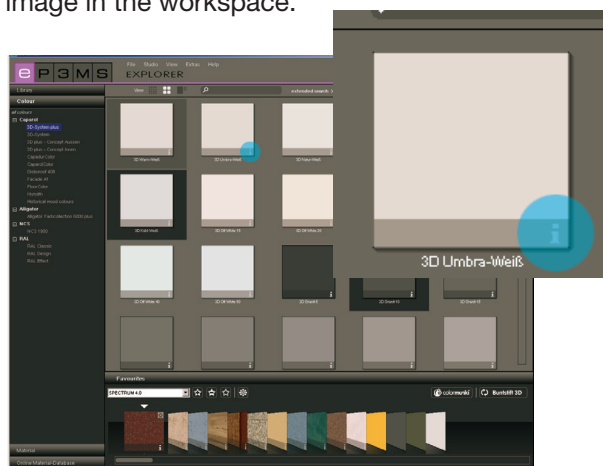


#### Colour selection

When you click the main category “All colours” you will be shown all the colours available in the SPECTRUM 4.0 database. In addition, you can refine your search by selecting manufacturers and individual collections. Click the “+” in front of the manufacturer’s name to see the respective collection list. If you click a manufacturer’s collection, you will be shown all the colours in this collection.

#### Colour details

Information about the name and further details about the colour can be obtained with the “medium” and “large” views (“Data views” see chapter 4.1.1) by clicking the “i” at the bottom right-hand edge of a colour image in the workspace.



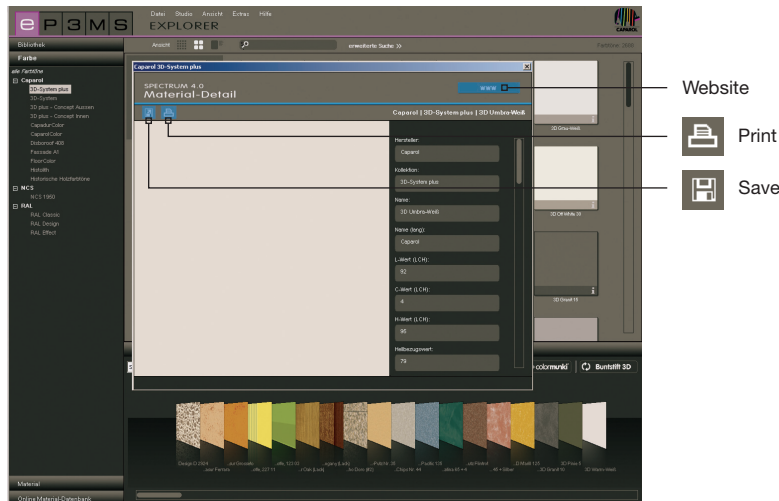
A window opens in the foreground containing an enlarged image of the colour and details of manufacturer, collection, name, RGB or LCH values, brightness reference value and colour family.

In addition, you can save the colour as a jpeg, TIFF or PNG file on your PC. To do this, click the “Save” symbol, give the file a name and click “Save”. To print the colour, click the “Printer” symbol. SPECTRUM 4.0 will automatically create a PDF file that you can both save and print out.

## 4. EXPLORER

You can access the website of the respective manufacturer by clicking the “www” button in the top right-hand corner of the window; further information about the colour and collection will be provided here. The “Back” button will take you back to the colour detail view.

To close the colour details, click the “X” at the top right-hand edge of the window.



### 4.2.3 Materials

The material database tab contains textures from Caparol as well as example surfaces from other well-known manufacturers that are available to you for design purposes. In addition, you can download materials from other manufacturers from the online material database (see chapter 4.2.4 “Online material database”).



### Material selection

When you click the main category “All materials” you will be shown all the materials available in the SPECTRUM 4.0 database. In addition, you can refine your search by selecting manufacturers and individual material collections.

#### 4. EXPLORER

Click the “+” in front of the manufacturer’s name to open the respective collection list.

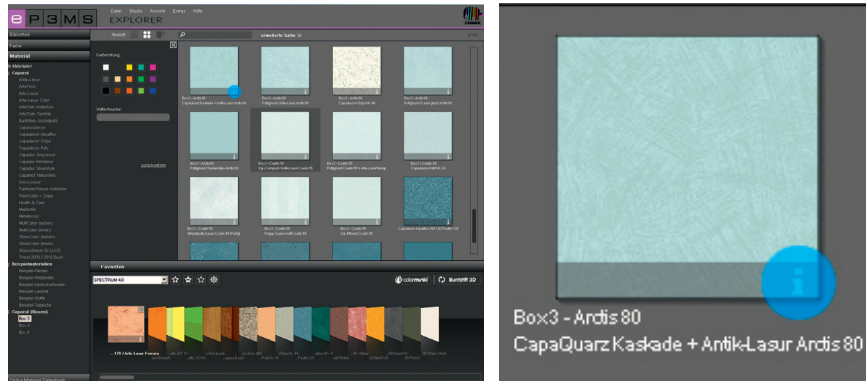
If you select one single collection from the manufacturer by mouse click, the contents of this collection will be displayed.

The total number of materials loaded and thus available for design purposes is shown at the top right-hand edge above the workspace.



#### Material details

Information about the name and further details about the material can be obtained depending on the view selected (“Data views” see chapter 4.1.1) by clicking the “i” at the bottom right-hand edge of a material image in the workspace.



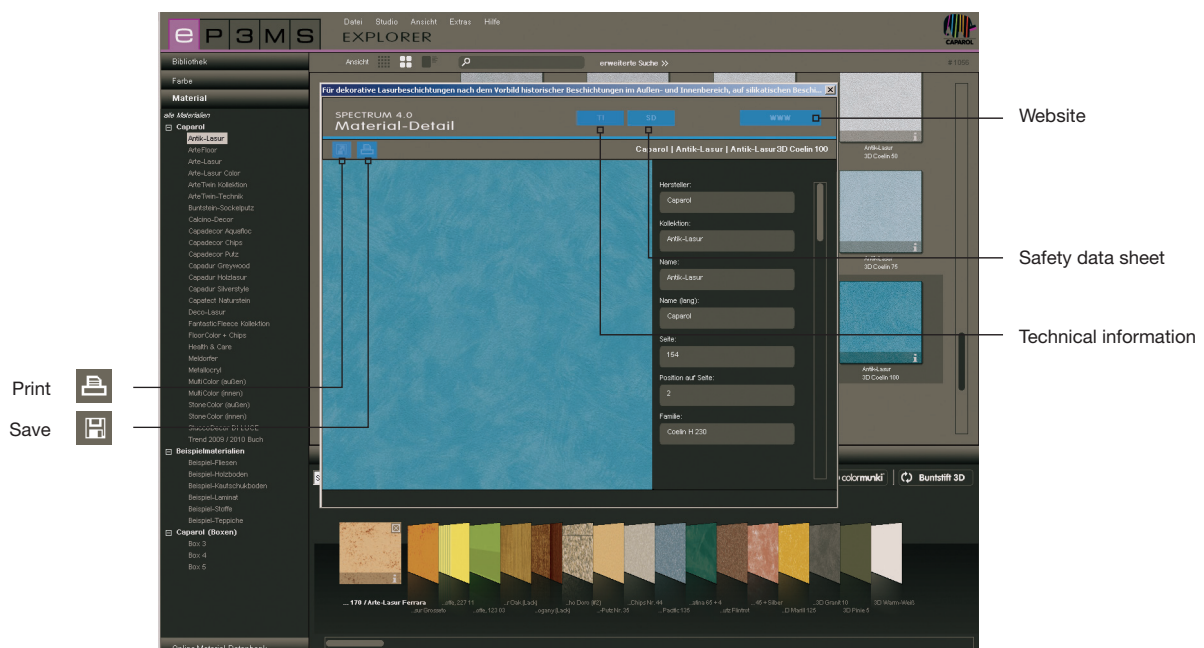
A window opens in the foreground containing an enlarged image of the material and details of manufacturer, collection, name, article number and colour family.

In addition, you can save the material as a jpeg, TIFF or PNG file on your PC. To do this, click the “Save” symbol, give the file a name and click “Save”. To print the material, click the “Printer” symbol. SPECTRUM 4.0 will automatically create a PDF file that you can both save and print out.

Technical Information (TI) and the Safety Datasheet (SD) for Caparol materials can be found using the “TI” and “SD” buttons in the middle of the top edge of the material data window (providing you are connected to the Internet).

You are linked to the website of the respective manufacturer by clicking “www” at the top right of the window. The “Back” button will take you back to the material detail view.

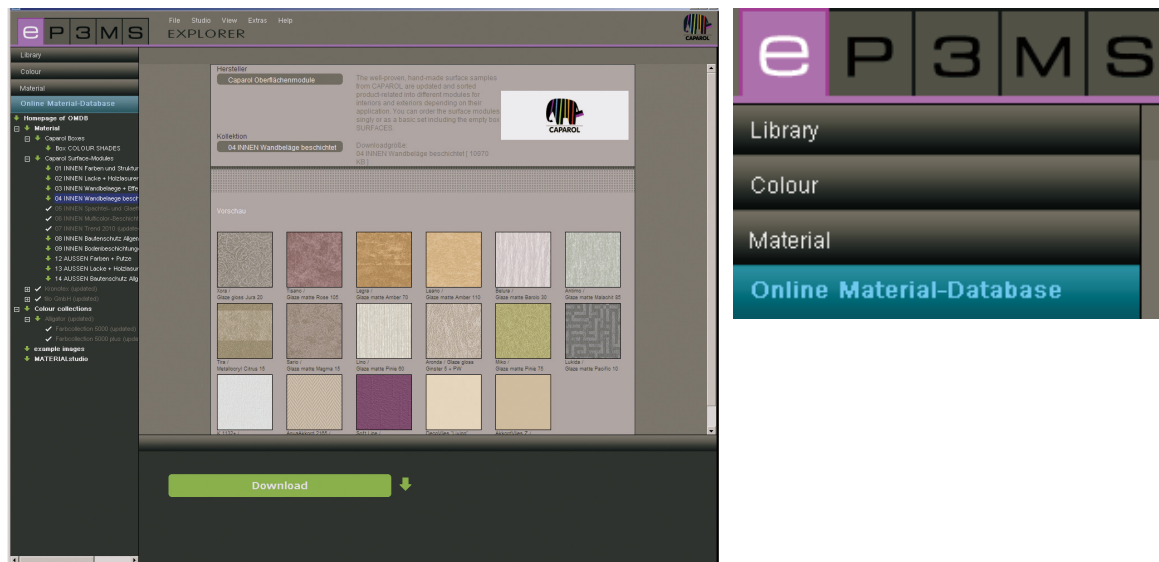
To close the material details, click the “x” at the top right-hand edge of the window.



## 4.2.4 Online material database

Use the online material database to download current collections from different manufacturers free from the Internet.

This way you load the latest materials and colours directly into your SPECTRUM 4.0 software and can use them directly for individual design purposes.



### How it works

Open the “Online material database” tab. Depending which range you would like to download the database contents from, you can choose between materials, colour collections, example images and the MATERIALstudio.

### Materials

Click here for updates from the material collections of individual manufacturers.

### Colour collections

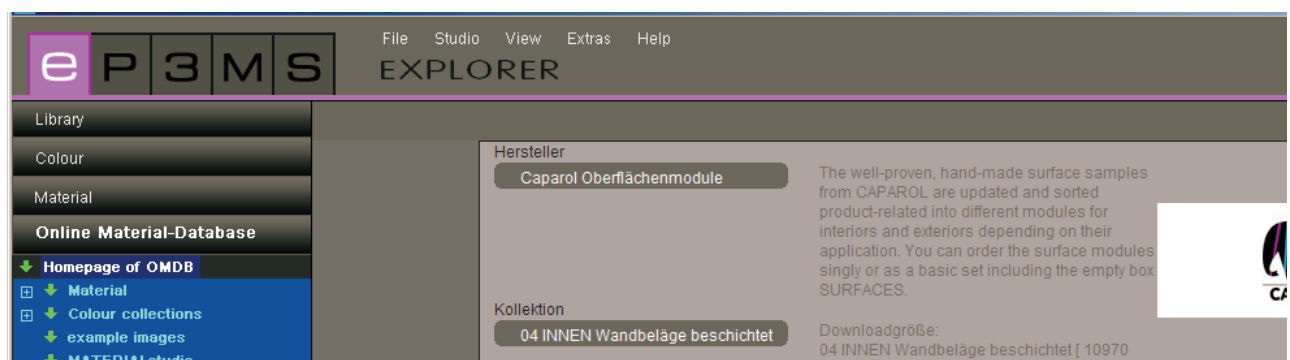
Click here for updates from the colour collections of individual manufacturers.

### Example images

You can find further example images to supplement your SPECTRUM image database here. You can also find image material from the predecessor version SPECTRUM 3.0 here.

### MATERIALstudio

Here you can find further material structures that you can combine into new material combinations in the MATERIALstudio module (see chapter 10 for myMaterial-Manager).

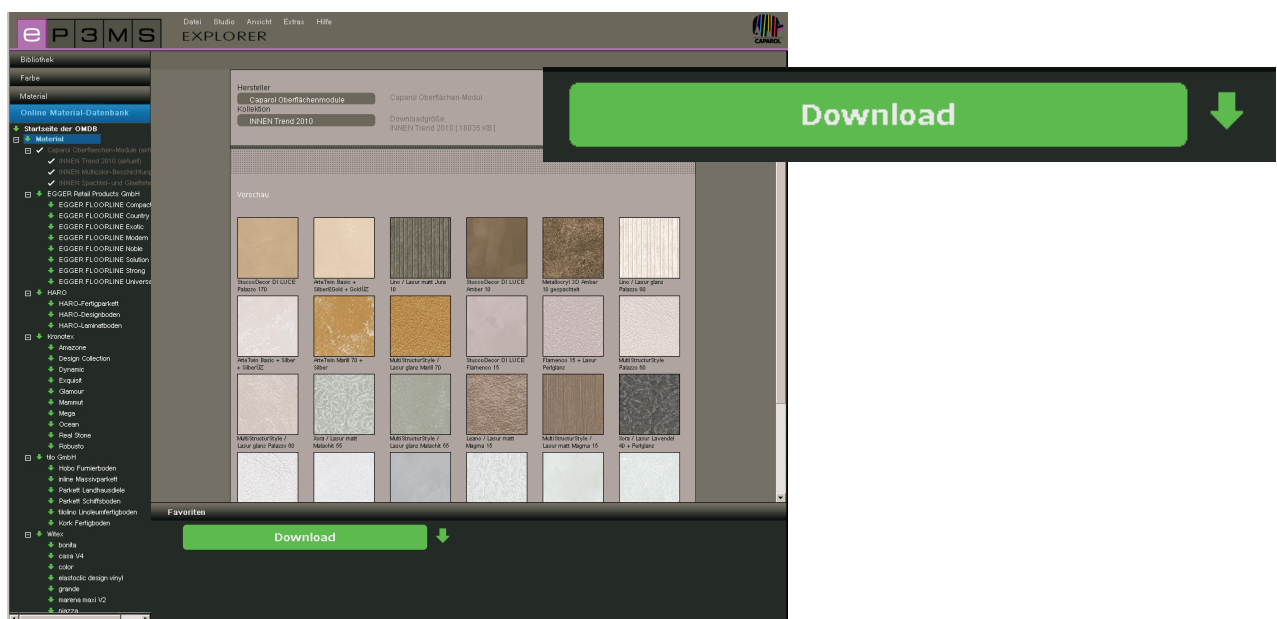


#### 4. EXPLORER

For each category you can find a selection of sub-categories with all the collections available. Choose the collection you would like to download. A “Download” button will appear in the lower area of the SPECTRUM 4.0 program interface. The required data is integrated directly in your SPECTRUM 4.0 database after this button has been clicked.

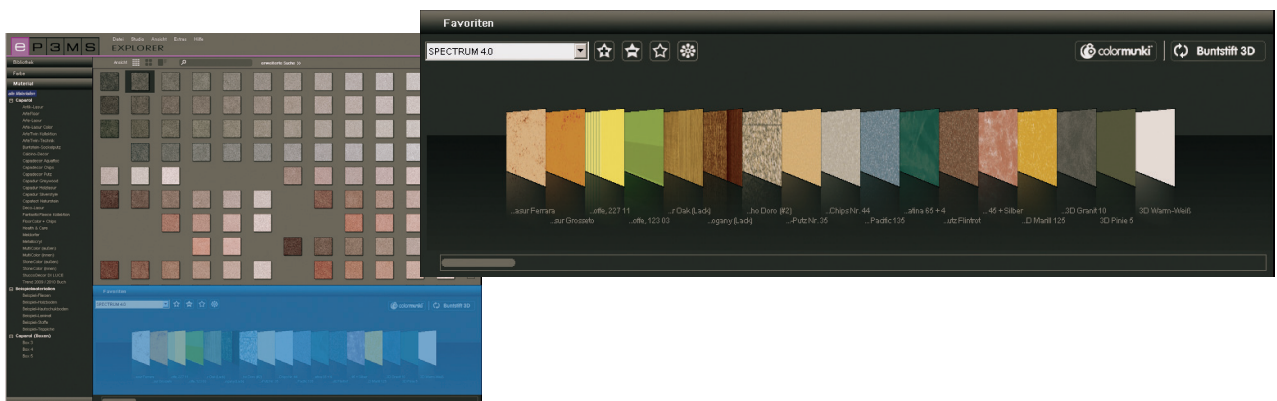
If you already have the product data from a sub-category, the category name is shown in grey and has a white tick mark next to it.

**Note:** The SPECTRUM 4.0 NewsletterService, which you can subscribe to through [www.spectrum-online.eu](http://www.spectrum-online.eu) or by registering directly in the program (main navigation under “Extras” “Register”), provides information about new collections.



### 4.3 Favourites

You can save certain colours or materials that you use regularly under “Favourites”- The EXPLORER favourite view is underneath the interface. Add favourites to the “SPECTRUM 4.0” standard folder or create your own new favourite sets and fill these with the colours and materials you require.





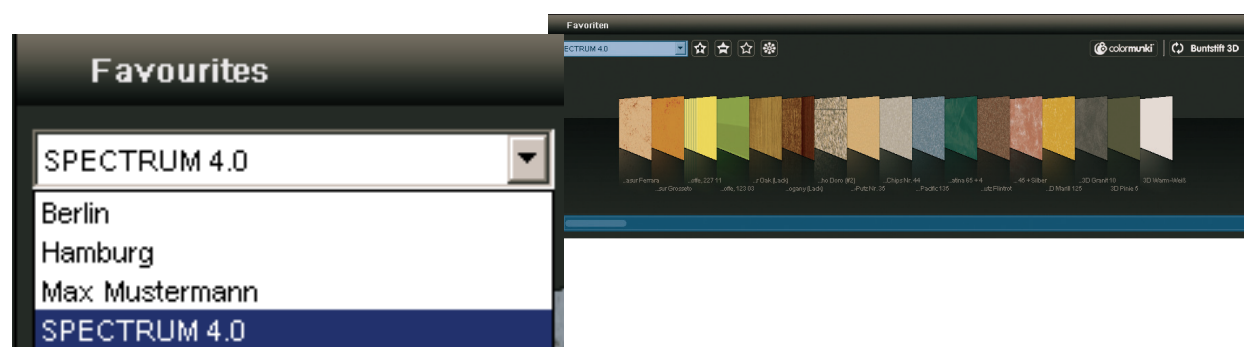
### Add samples to set of favourites

Add a colour or material to a set of favourites by simply clicking the sample in the workspace (a sample becomes light grey when the mouse is on it - samples that are already stored in the selected set of favourites are shown with a dark-grey edge). A second click on the product removes it from the set of favourites - alternatively you can click the small "X" at the top right-hand edge of each individual sample in the set of favourites.

**Note:** Products you add to favourites are automatically saved and are available as individual archives when working with SPECTRUM 4.0 until you delete them.

## Choose favourites

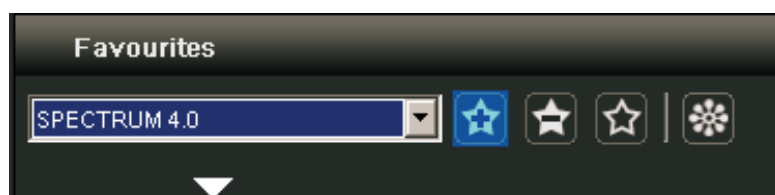
To choose colours and materials within a set of favourites, move the mouse over the favourites cards. The card your mouse is resting in is accentuated so that it can be seen better. If you have a long list within a set of favourites, use the scroll bar at the bottom edge of the window to search through the contents.



### Create new set of favourites

Alongside saving colour or material samples in the set of favourites “SPECTRUM 4.0”, it is possible to create further sets of favourites that you can fill with the colours and materials used for certain projects, for example.

Add a new set of favourites by clicking the “star +” symbol in the favourites tab. A window opens for you to enter a name for the new set of favourites. After confirmation by “OK” the new empty set will automatically appear in the dropdown menu of the “Favourites” tab. Fill your set of favourites by clicking individual colour and material samples in the colour and material tabs (see “Add samples to favourite set”).

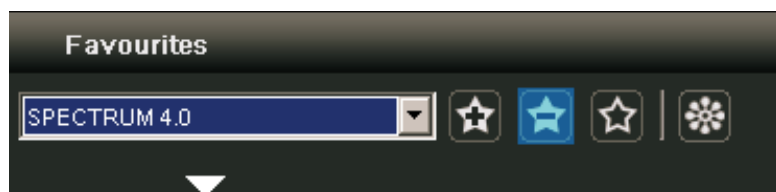


**Note:** Samples selected are always added to the set of favourites currently being shown in the dropdown menu. For this reason, always select the required set of favourites before you add further samples.



### Delete set of favourites

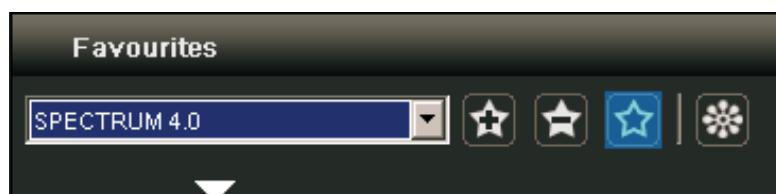
If you would like to remove a complete set of favourites with all its contents from the favourites tab, first choose the set to be deleted in the dropdown menu. Then click the “star -” symbol in the “Favourites” tab and confirm your choice by clicking “Yes” in the window that opens. The set of favourites is no longer in the dropdown menu selection and has been irrevocably deleted.



### Clear set of favourites

To delete a sample from a set of favourites, click the “X” at the top right on the respective sample.

If you would like to delete the entire contents of a set of favourites, click the empty “star” symbol (“Clear favourites”) in the favourites tab. The set of favourites itself is retained and can be refilled.



### Embed personal pictures

You can also add your own images to a set of favourites (e.g. if you would like to use this as photo wallpaper or a wall mural).

To do this, click the “flower” symbol (“Embed personal pictures”). In the window that opens, select an image from your PC or an external data carrier by clicking “Open folder” on the top left, and load it into the window by clicking “Open”. Then specify the required width and height in cm for your image. Then click “OK” – the image now appears in the set of favourites you have currently selected.

If you would like to import your image in an unproportional size, deactivate the tick between height and width and enter the measurements you require. Your image is then imported distorted accordingly.

**Note:** Bear the size of the respective area required for the image in the *PHOTOstudio* when selecting your image measurements.

